



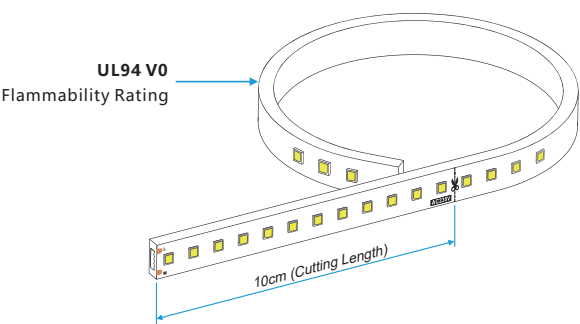
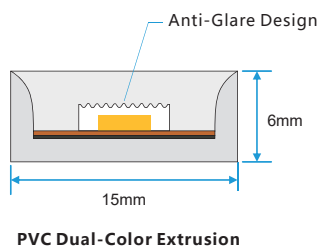
# AC230V LED Strip Light

## Driverless, Overvoltage Protection

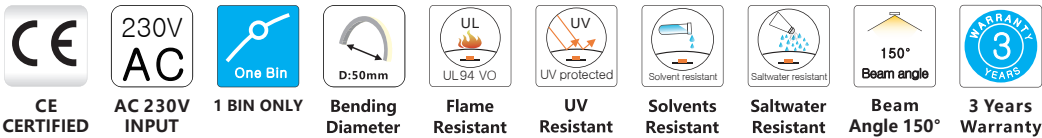


# 1. Specification & Parameters:

## 1.1 External Dimension



**Notice:**  
Size of each section is 10cm, and cutting at “black line” place.  
The dimension tolerance of height is  $\pm 0.3\text{mm}$ , and tolerance of width is  $\pm 0.3\text{mm}$ .



## 1.2 Technical Parameters

Technical Data	
Product Code	LY120-HS2835W-230V
Colour	W/WW
Working Voltage	220-240VAC, 50/60Hz
LED Qty/m	120LEDs /m
LED Type	SMD 2835
CRI	CRI>80
Rated Power/m	12W/m
Light Efficiency $\pm 10\%$	110lm/w
LED Distance	8.33mm
Min. Cutting LED	12LEDs
Min. Cutting Length	10cm
Weight/m	120g
Storage Temperature	-25~60°C (-13~140°F)
Environmental Working Temperature	-20~45°C (-4~113°F)
IP Rating	IP65

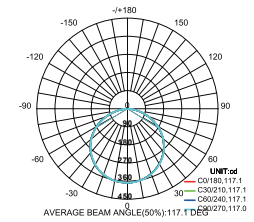


## 1.3 Optical Parameters

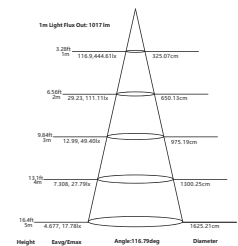
### Optical Data

Product Code	LY120-HS2835W-230V	Lumen/m	
		Rated CRI	CRI80
Color	Wavelength	CCT	
Ultra WW	/	2000K±100K	1028 lm/m
→ Super WW	/	2400K±100K	1080 lm/m
Warm White	/	2725K±100K	1200 lm/m
Warm White	/	3045K±150K	1260 lm/m
Natural White	/	4000K±150K	1320 lm/m
Day White	/	5000K±200K	1320 lm/m
Cool White	/	6500K±250K	1320 lm/m

### Luminous Intensity Distribution

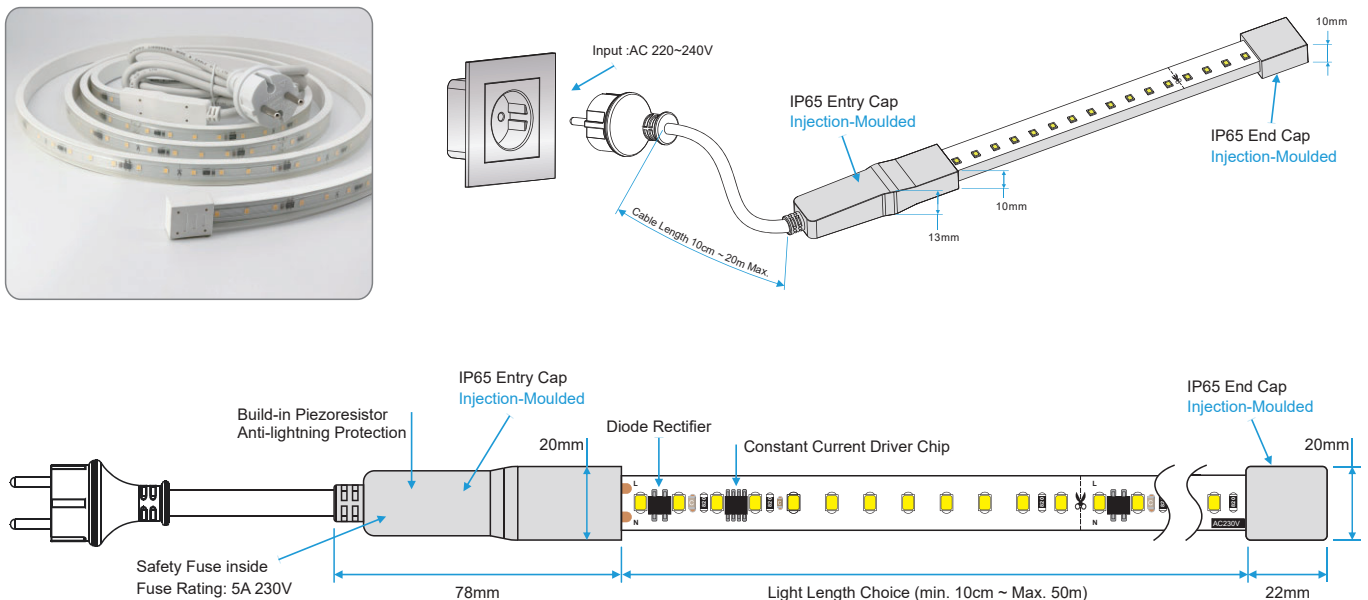


### illumination diagram



## 2. Types of Connector

### 2.1 Outdoor Use & IP65 Waterproof Connector



#### > Notes:

- IP65 Outdoor Use: Pls do not cut off the LED Tape light, and DIY cutting is not allow;
- All kinds of customized length of the light are available, from 10cm minimum ~ 50m maximum ;
- Do not submerge LED Tape light in any liquids, or use the light in the vicinity of standing water;
- Outdoor Application Scope: Outer Wall of building, Overbridge etc., and Suitable for raining environments;



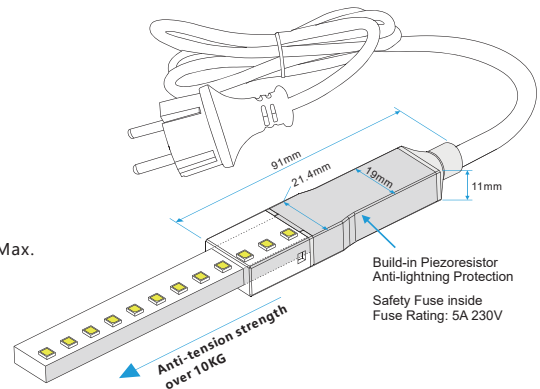
### Power Cord

Connects light to power supply  
IP40 DIY connector (indoor use)

Cable Length available in 0.3m min ~ 20m Max.

#### Screwless Terminal DIY assembly

AC Plug (2 Pin) \*1  
Anti-tension Shell \*1  
PC Fixing Clip \*1

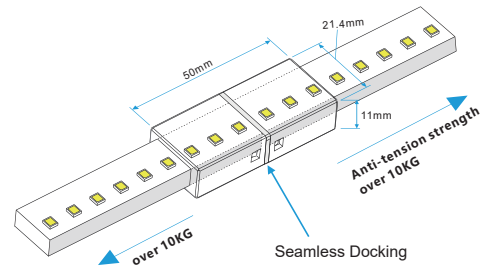


### Docking Connector

Combine two pieces of the lights together  
IP40 DIY connector (indoor use)

#### Seamless Docking, Screwless Terminal

Anti-tension Shell \*1  
Feed Connector (2 Pin) \*1  
PC Fixing Clip \*2

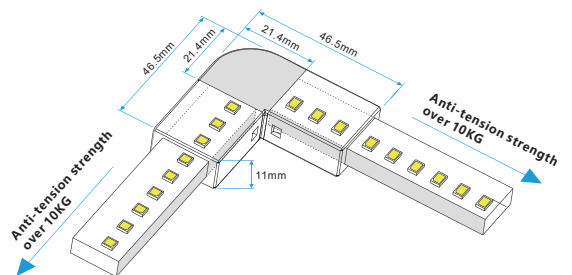


### L-Type Connector

Combine two pieces of the lights together  
IP40 DIY connector (indoor use)

#### Seamless Docking, Screwless Terminal

L-Type Anti-tension Shell \*1  
L-Type Feed Connector (2 Pin) \*1  
PC Fixing Clip \*2

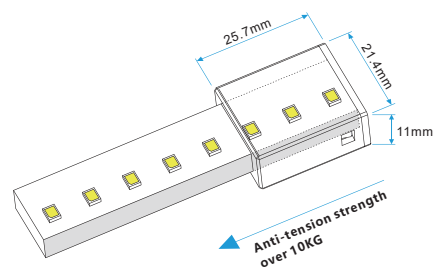


### End Cap

Termination Protection of the light,  
IP40 DIY connector (indoor use)

#### Screwless Terminal DIY assembly

Anti-tension Shell \*1  
PC Fixing Clip \*1

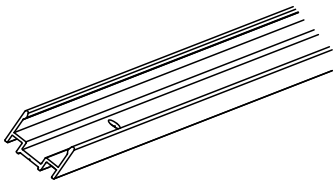
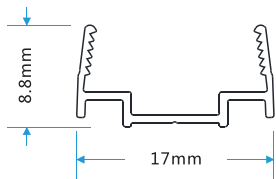
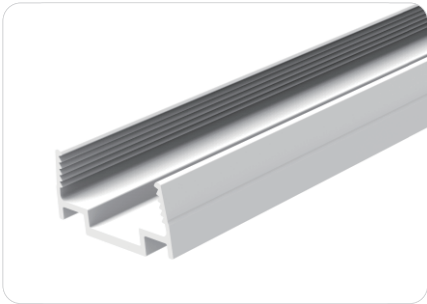


#### > Notes:

- Before making any cuts, installation, maintenance or connection, and be sure the light is power-off!
- IP40 Indoor Use: Pls cut the light and assemble all connectors according to the instruction manual;
- Don't install and light up and use the light under water, Only IP40 application places can be used for this light;
- Indoor Application Scope: Cove of Theater, and cove of hotel lobby etc., and Suitable for dry and anti-dust environments;

# 3. Installation & Profile

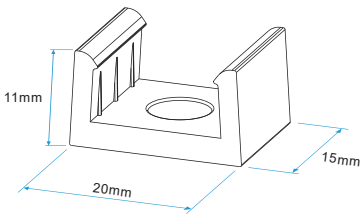
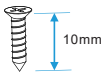
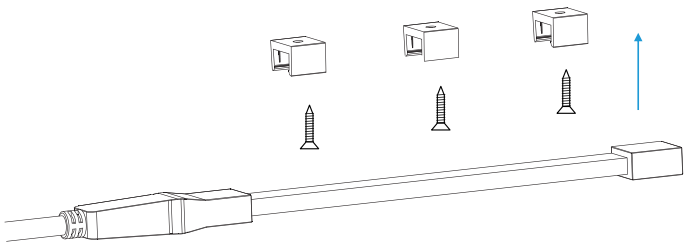
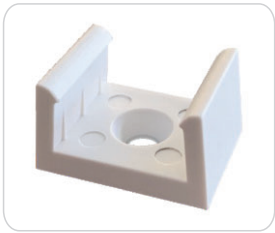
## 3.1 Plastic Profile



Code	W*H(ft)	Profile Length(mm)	Hole Size (mm)	Hole Number (pcs)
LY120-HS2835W-230V-MP	17mm * 8.8mm	500mm	Φ3.5mm	2
		1000mm	Φ3.5mm	3
		1500mm	Φ3.5mm	5
		2000mm	Φ3.5mm	7

- Notes:**
- 1. Plastic Profiles's raw material is PC, white/black/red paint available;
  - 2. Any customized Length available too, such as 0.5m or 1m or 1.5m, and 2m length maximum;
  - 3. Each 0.3m length with 1 hole and 1 screw, and installation referece to the user manual;

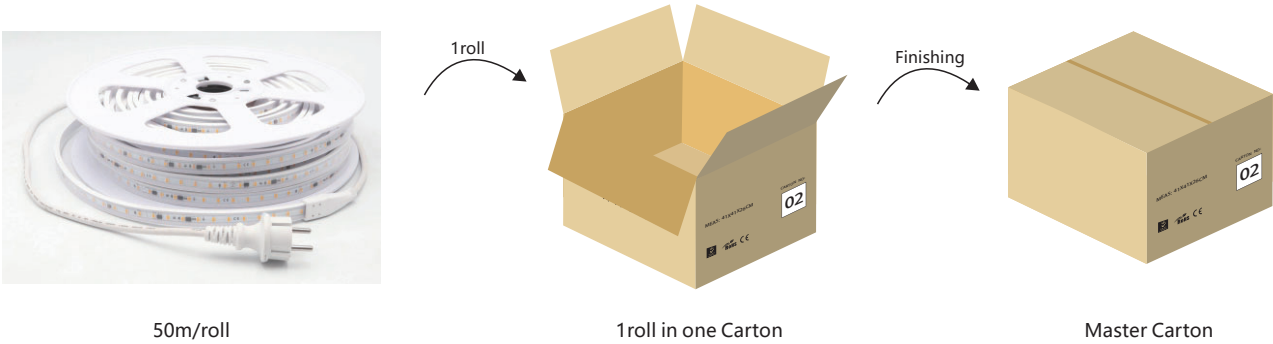
## 3.2 Plastic Mounting Clip




- Notes:**
- 1. Mounting Clip's raw material is PC, and transparent/white/black/red paint available;
  - 2. Each 0.3m length with 1 Mounting Clip + 1 screw, and installation referece to the user manual;

# 4. Installation & Profile

## 4.1 Reel packaging for projects



## 4.2 Reel packaging for retails

	Light Length (m/one roll)	Carton Dimension (cm)	Light Number (rolls)	Carton Weight (kg)
	20m	25*21*33	1 roll	3.5
	30m	31*23*39	1 roll	4.8
	40m	31*23*39	1 roll	6.2
	50m	34*27*43	1 roll	7.9